



MOJAVE PRESERVE TRAIL GUARDIAN EVENT

April 23, 2022

TRAIL GUARDIAN PROJECT PLAN

PAGE TITLE FORM # CONTENTS

- 1 Plan Cover Sheet III-1 Incident name/key info; drawing or map.**
- 2 Plan Organization III-2 Personnel names assigned to leader jobs.**
- 3 Plan Summary III-3 Plan overview; good VIP briefing handout.**
- 4 ~~Leader Assignment.~~ Not used**
- Sheet III-4 ~~Division/Group personnel specific assignment.~~**
- 5 ~~Plan Special~~**
- Instructions III-5 ~~Handy for convoys, drawings and/or maps. Use when needed.~~**
- 6 Tailgate Safety**
 - Session VI-1 Safety info Medical Plan; danger points; health and safety.**

PLAN COVER RICS III-1

EVENT: Mojave Trail Guardian

TG Project Coordinator: Kent Reynolds OLB, Mike Gauthier, & MDLT Rep.

EVENT DATE: 10.23.21 LOCATION: Mojave Preserve

PLAN ORGANIZATION ^{RICS III-2}

EVENT: Mojave Preserve Trail Guardian Project

TG Project Coordinator: Kent Reynolds OLB, Mike Gauthier NPS, MDLT Representative

EVENT DATE: April 23, 2022

Coordinator	Kent Reynolds OLB & Mike Gauthier NPS
Operations	Sierra Willoughby NPS & Bob Brann OLB
Documentation Team Leader	Lucy Reynolds OLB
Public relations/media	Michael Murgia, Mike Johnston & NPS Rep.

Project Groups:

Kessler Ranch Barn Roof	Mike Keith & NPS Rep.
Mojave Desert Land Trust Cima	Bob Brann OLB & MDLT Rep.
Joshua Tree watering	Deb and Mike Lee OLB & Drew Kaiser NPS
MDLT shed removal in the wilderness	Tom Butler & Kevin Reinig & MDLT Rep.

PLAN SUMMARY ^{RICS III-3}

EVENT: Mojave Preserve Trail Guardian Event

Project Coordinator: Kent Reynolds & Mike Gauthier NPS

EVENT DATE: April 23, 2022

I. GOALS, OBJECTIVES & EXPECTATIONS:

On April 23; Overland Bound will replace the corrugated metal roof on the early 1900's barn at Kessler Ranch, remove garbage and non-historical debris from properties owned by the MDLT (Mojave Desert Land Trusts), and water the newly planted Joshua Trees.

II. ORGANIZATION:

All aspects of the Trail Guardian Event will be directed by NPS & MDLT, Overland Bound Volunteers will work at the direction of NPS under the volunteer agreement.

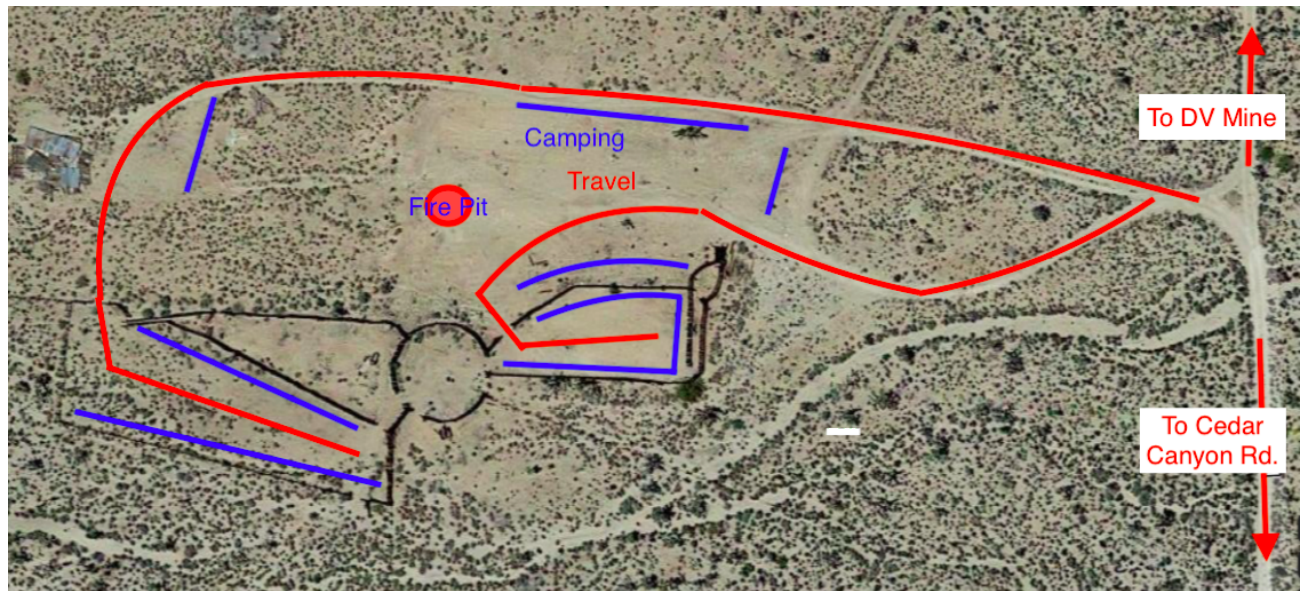
III. LOGISTICS:

Base Camp will be at the Thomas Place/Ranch, See attached base camp travel & camping diagram. We will be at the event locations during lunch so please bring food and water. At no time will alcoholic beverages be allowed at the work locations.

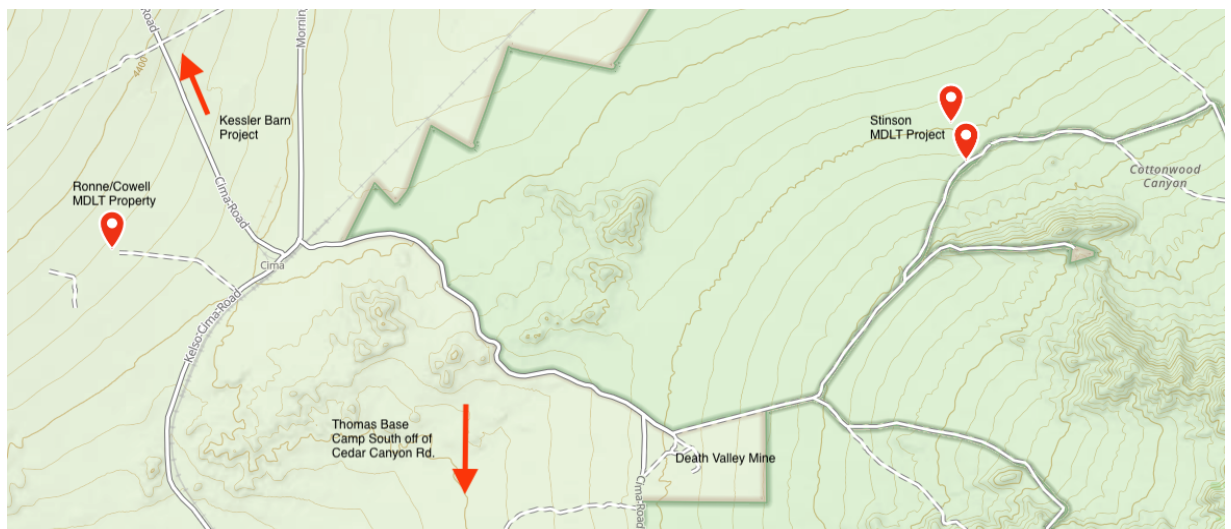
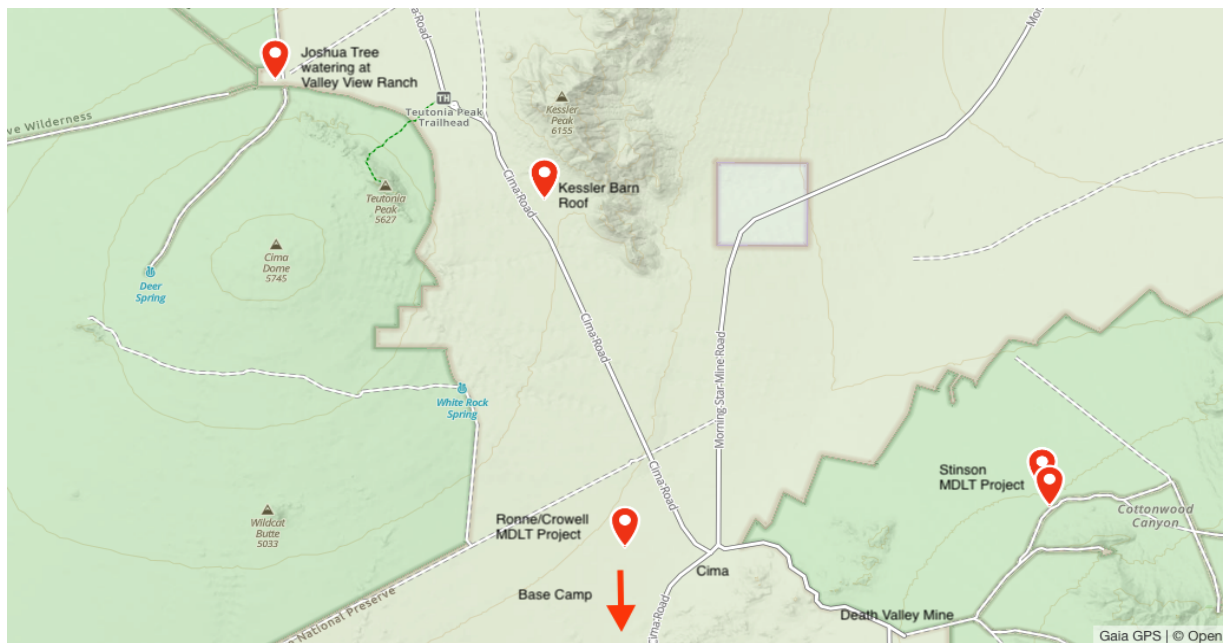
IV: COMMUNICATIONS:

All Overland Bound comms will be on Ham; Kessler and Mojave Desert Land Trust sites will be on 146.460 and Joshua Tree watering will use 146.400.

Base Camp



PROJECT LOCATIONS



SAFETY (Job Hazard Analysis) ^{RICS III-6}

EVENT: Mojave Preserve Trail Guardian event

Project Coordinator: Kent Reynolds OLB & Mike Gauthier NPS

EVENT DATE: Safety Officer: Kent Reynolds and Group Leaders

I. PROJECT OVERVIEW:

#1 Priority Kessler Ranch Barn Roof;

Finish framing the roof and install corrugated metal roofing. This project is to be completed by a small group of members who have been to the site previously.

MDLT Property's;

Removing non-historical debris and trash from properties owned by the MDLT. These properties will be deeded over to NPS once the cleanup is complete.

Debris will be staged in a convenient spot on the property for later removal. General cleanup of the grounds concentrating on broken glass.

Joshua Tree watering;

Work under the direction of the Park Botanist to water and document the watering of the newly planted Joshua Trees.

II. KEY DANGER POINTS:

Some watch out situations;

Sharp objects, lifting heavy debris, possible snakes, open mine shafts.

III. SAFETY GEAR CONSIDERATIONS:

Everyone must wear work boots or heavy hiking boots, work gloves "not nitrile gloves", eye protection when around flying debris. If operating within the proximity of a paved road OLB vests will be worn. (Kent will have vests)

IV. PERSONAL HEALTH & HYGIENE:

CDC Guidelines Covid-19 social distancing will be followed and volunteers will supply their own personal protective equipment.

MEDICAL PLAN ^{RICS III-6}

EMERGENCY PROCEDURES:

There will be medical personnel available but not assigned to a particular area. In the event of an incident contact your Group Team Leader.

HOSPITALS:

If ground transportation is required, NPS will coordinate with local EMS.

OTHER NOTES:

Cell service does work in the majority of the park so in the event you are injured and you are not with our group call 911. Make sure you have your GPS location.

In the event you do not have a cell signal use your radio communications or two way satellite device to call for help.

Directions

Friday base camp;

Thomas Base Camp 35.175409 -115.462134

From Highway 15

Take Cima Road exit. (Fuel is at the exit)

South East on Cima road through to Cima

Right on Kelso Cima Road south

Left on Cedar Canyon 35.176153 -115.509233

Left on marked road 35.163878 -115.455713

From Highway 40

Take Kelbaker road exit

Left on Kelbaker road

Right on Kelso Cima road

Right on Cedar Canyon 35.176153 -115.509233

Left on marked road 35.163878 -115.455713

Saturday;

Kessler Ranch

35.29718 -115.53444

MDLT Ronne/Cowell Property

35.23677, -115.51708

MDLT Stinson Property

35.24396, -115.43412

Joshua Tree watering, Valley View Ranch

35.31848, -115.58545